



COVID-19 (Coronavirus)

Data is updated Monday - Friday. For questions, e-mail or text covid19@elkocountynv.net or call (775) 748-0204. Last updated 8/10/2020 @ 6:30 PM.

Confirmed cases are initially reported in the county where the patient is TESTED. Once the epidemiological investigation is performed, the case will be reported in the county where the patient resides.

555
TOTAL CONFIRMED CASES

80
ACTIVE - CONFIRMED

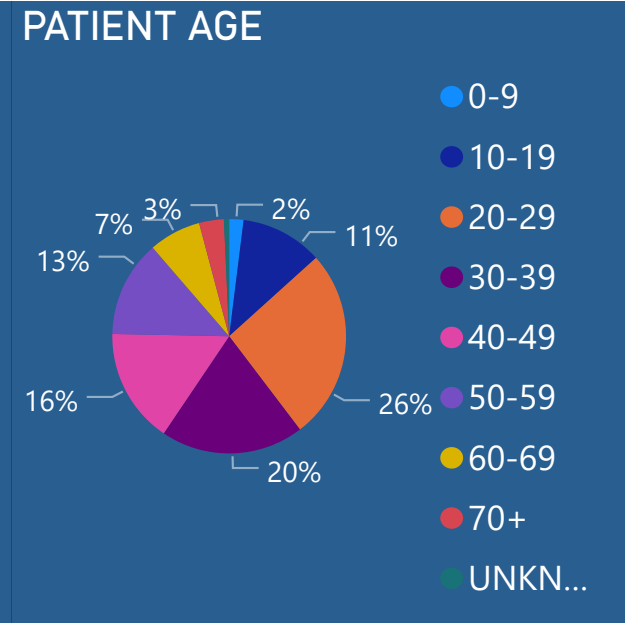
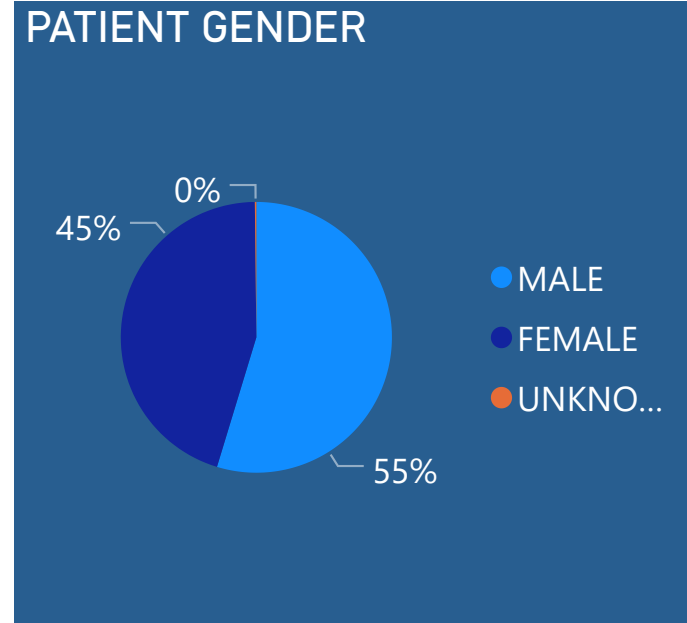
473
RECOVERED (PCR & ANTIBODY)

2
DEATHS

LOCATION	CONFIRMED CASES	ACTIVE CASES	RECOVERED CASES	% OF TOTAL CASES
CARLIN	13	3	10	2.34%
ELKO	310	52	257	55.86%
JACKPOT	1	0	1	0.18%
SPRING CREEK	87	13	74	15.68%
UNDER INVESTIGATION	4	2	2	0.72%
WELLS	8	2	6	1.44%
WEST WENDOVER	133	9	123	23.96%

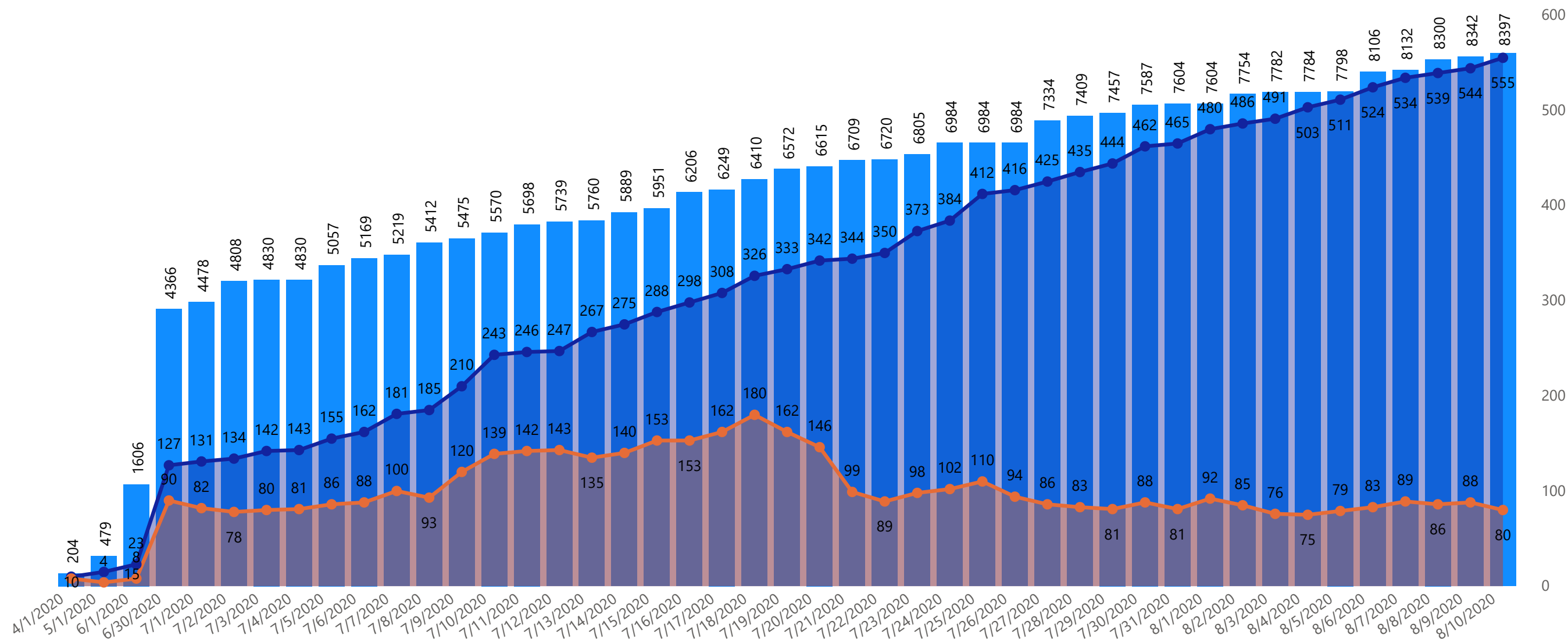
8397
PCR TESTS PERFORMED

7474
PEOPLE TESTED



TOTAL TESTS BY DATE, CONFIRMED AND ACTIVE CASES

TOTAL # OF TESTS - COLUMN VALUES



TESTS BY DATE

● TOTAL # OF TESTS - COLUMN VALUES ● DAILY TOTAL CONFIRMED CASES ● ACTIVE CASES

6.60%

CUMULATIVE POSITIVITY RATE

1,005.70

CASE RATE PER 100,000

The Cumulative Positivity Rate and Case Rate Per 100,000 data points are based on the Nevada Health Response dashboard. The methodology for calculating this data can be found at <https://nvhealthresponse.nv.gov>.

These metrics are important based on the newest plan, Road to Recovery: Moving to a New Normal, as they are used to evaluate the risk level of the particular county or city and determine the level of corresponding mitigation.

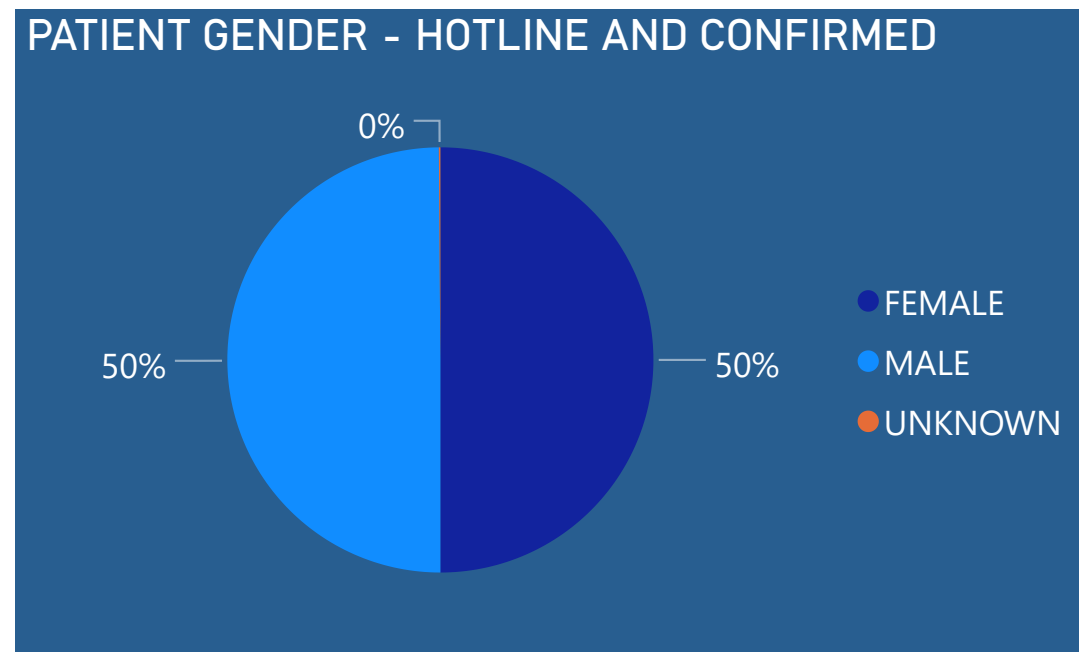
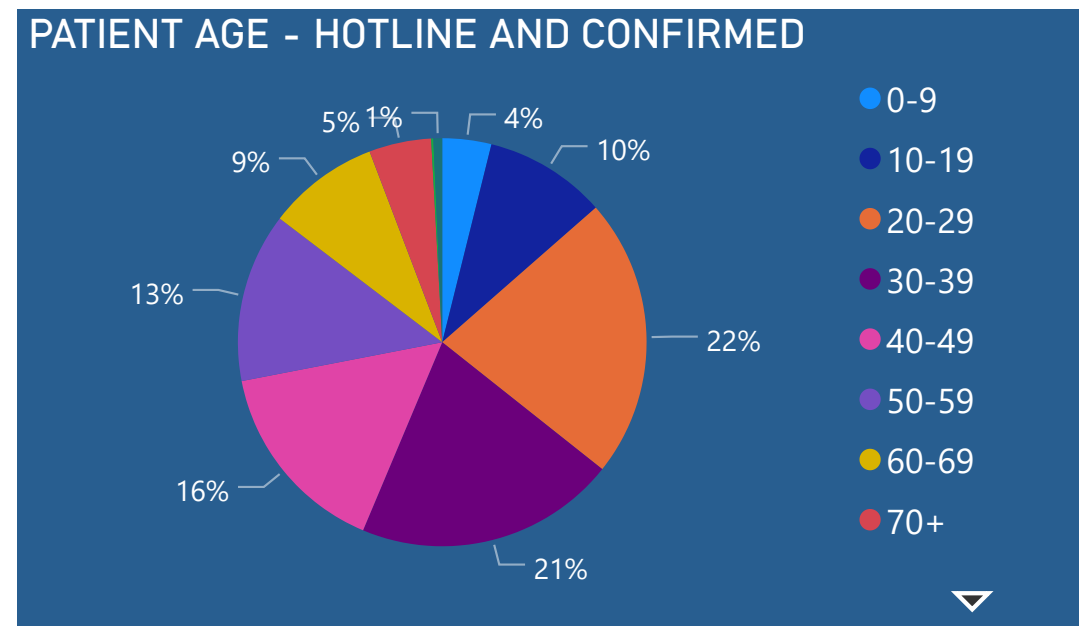
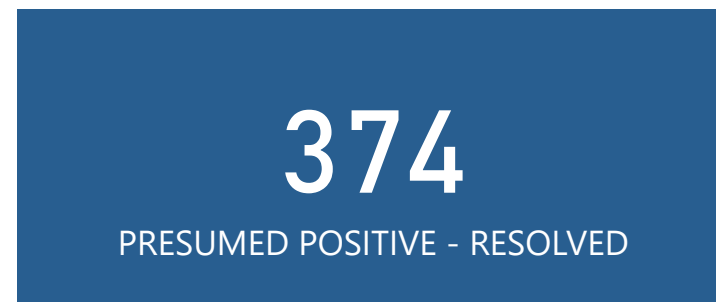
COVID-19 (Coronavirus)

The data contained in this dashboard is based on information provided by the NV DPBH (confirmed cases) and the COVID-19 Hotline and includes all counties served by the hotline. Data is updated Monday - Friday. For questions, e-mail or text covid19@elkocountynv.net or call (775) 748-0204.

The COVID-19 hotline serves Elko, Lander, Eureka, White Pine, Pershing and Humboldt counties. The data on this page is the aggregate of all calls to the hotline. **The hotline is available Monday - Friday from 9am to 5pm (closed 12-1pm). Call 775-777-2507.**

*Presumed positive means that a person had mild to moderate symptoms consistent with COVID-19 OR was a close contact of a confirmed case. Individuals are advised to self-isolate to reduce potential exposure to others and prevent community spread of the virus. In some cases, patients are referred to a higher level of care for further evaluation and testing.

*Presumed negative means that a person did not have symptoms consistent with COVID-19 or contacted the hotline for testing related to travel requirements or pre-medical procedure requirements.



Contact: Rob Stokes, County Manager
 Telephone: (775) 738-5398
 E-mail: rstokes@elkocountynv.net
 Date: August 10, 2020

FOR IMMEDIATE RELEASE

ELKO COUNTY COVID-19 CASE UPDATE – 8/10/2020

Elko County is reporting twenty-two new confirmed cases including four additional cases from Friday, eight cases Saturday, six cases Sunday and four new cases today. A total of thirty of thirty cases were recovered over the weekend and today.

In effort to slow the spread of the virus, Elko County continues to encourage individuals to practice social distancing, not socialize in big groups, wear a mask, and practice general hygiene and cleanliness.

The breakdown of total confirmed cases is as follows:

- 555 confirmed cases
- 80 active cases
 - 2 active cases hospitalized
- 473 recovered cases
- 2 deaths

One previously reported case (Case #468) was reclassified to another jurisdiction following the disease investigation and contact tracing process.

The Nevada Health Response website has updated information regarding the positivity and case rates for Elko County, which are two important indicators of elevated disease transmission risk in our area. This information can be found at <https://nvhealthresponse.nv.gov/>.

All new cases have been confirmed through PCR testing. Each case is unique to an individual. Elko County has not had any cases where an individual has had a confirmed case which has been resolved and later tested positive again.

CASE #	DATE COUNTY NOTIFIED	DATED TESTED	GENDER	AGE	LOCATION	SYMPTOMS	CONTACT
534	08/07/20	8/3/2020	MALE	70+	ELKO	YES	CONNECTION TO A CONFIRMED CASE
535	08/07/20	8/3/2020	FEMALE	60-69	ELKO	YES	CONNECTION TO A CONFIRMED CASE
536	08/07/20	8/3/2020	MALE	40-49	ELKO	RESOLVED	NO KNOWN CONNECTION TO A CONFIRMED CASE
537	08/07/20	8/3/2020	FEMALE	40-49	ELKO	YES	CONNECTION TO A CONFIRMED CASE
538	08/08/20	8/5/2020	FEMALE	30-39	ELKO	YES	NO KNOWN CONNECTION TO A CONFIRMED CASE
539	08/08/20	8/5/2020	MALE	50-59	CARLIN	YES	NO KNOWN CONNECTION TO A CONFIRMED CASE
540	08/08/20	8/6/2020	MALE	40-49	ELKO	YES	NO KNOWN CONNECTION TO A CONFIRMED CASE
541	08/08/20	8/6/2020	MALE	20-29	ELKO	YES	NO KNOWN CONNECTION TO A CONFIRMED CASE
542	08/08/20	8/8/2020	MALE	UNKNOWN	ELKO	NO	NO KNOWN CONNECTION TO A CONFIRMED CASE
543	08/08/20	8/6/2020	MALE	60-69	ELKO	YES	NO KNOWN CONNECTION TO A CONFIRMED CASE
544	08/08/20	8/6/2020	FEMALE	60-69	ELKO	YES	CONNECTION TO A CONFIRMED CASE
545	08/08/20	8/7/2020	MALE	30-39	SPRING CREEK	YES	NO KNOWN CONNECTION TO A CONFIRMED CASE
546	08/09/20	8/6/2020	MALE	60-69	SPRING CREEK	NO	NO KNOWN CONNECTION TO A CONFIRMED CASE
547	08/09/20	8/3/2020	MALE	10-19	ELKO	YES	NO KNOWN CONNECTION TO A CONFIRMED CASE
548	08/09/20	8/6/2020	MALE	40-49	SPRING CREEK	YES	NO KNOWN CONNECTION TO A CONFIRMED CASE
549	08/09/20	8/6/2020	MALE	30-39	ELKO	YES	NO KNOWN CONNECTION TO A CONFIRMED CASE
550	08/09/20	8/6/2020	MALE	30-39	ELKO	YES	NO KNOWN CONNECTION TO A CONFIRMED CASE
551	08/09/20	8/7/2020	FEMALE	40-49	SPRING CREEK	YES	CONNECTION TO A CONFIRMED CASE
552	08/10/20	8/5/2020	FEMALE	30-39	SPRING CREEK	YES	CONNECTION TO A CONFIRMED CASE
553	08/10/20	8/10/2020	FEMALE	30-39	ELKO	UNKNOWN	UNDER INVESTIGATION
554	08/10/20	8/10/2020	MALE	30-39	ELKO	UNKNOWN	CONNECTION TO A CONFIRMED CASE
555	08/10/20	8/6/2020	MALE	40-49	ELKO	UNKNOWN	UNDER INVESTIGATION

Due to medical privacy requirements and to protect their identity, no further information about the case will be released.

The COVID-19 Hotline is available to assist those who are experiencing symptoms consistent with COVID-19 or for general questions. The hotline can be reached at 775-777-2507 or by texting or e-mailing covid19@elkocountynv.net Monday through Friday from 9am to 5pm (closed from noon to 1pm for lunch).

In addition, Dr. Bryce Putnam encourages the public to help stop the spread of respiratory illnesses by taking personal accountability and practicing preventative measures such as wearing a mask while in public and:

- Avoiding close contact with people who are sick. When you are sick, keep your distance from others.
- If possible, stay home from work, school, and errands when you are sick. This will help prevent spreading your illness.
- Covering your mouth and nose with a tissue when coughing or sneezing. Serious respiratory illnesses are spread by cough, sneezing or unclean hands.
- Washing your hands with soap and water for at least 20 seconds, especially after going to the bathroom; before eating; and after blowing your nose, coughing or sneezing. If soap and water are not available, use an alcohol-based hand sanitizer that contains at least 60% alcohol.
- Avoiding touching your eyes, nose, and mouth.
- Clean and disinfect frequently touched objects and surfaces using a regular household cleaning spray or wipe. Remember to clean your cellphones.

People with COVID-19 have reported a wide range of symptoms – ranging from mild symptoms to severe illness.

Keep an eye out for symptoms that may appear 2-14 days after exposure to the virus. People with the following symptoms should reach out to their healthcare provider or call the COVID-19 hotline at (775) 777-2507 or text or email covid19@elkocountynv.net.

- Fever or chills
- Cough
- Shortness of breath or difficulty breathing
- Fatigue
- Muscle pain or body aches
- Headache
- New loss of taste or smell
- Sore throat
- Congestion or runny nose
- Nausea or vomiting
- Diarrhea

If you have any of these **emergency warning signs*** for COVID-19 get **medical attention immediately**:

- Trouble breathing
- Persistent pain or pressure in the chest
- New confusion
- Inability to wake or stay awake
- Bluish lips or face

*This list is not all inclusive. Please consult your medical provider for any other symptoms that are severe or concerning to you.

Call 911 if you have a medical emergency: Notify the operator that you have, or think you might have, COVID-19. If possible, put on a cloth face covering before medical help arrives.

Mental Health services are available in Nevada at this time. Rural Clinics Immediate Mental Health CARE Team can be reached at 1-877-283-2437 and are available to support adults in Rural Nevada who need immediate mental health assistance. The Rural Mobile Crisis Response Team can be reached at 1-702-486-7865 and are available to support children and families for those under the age of 18. The National Suicide Prevention Lifeline can be reached at 1-800-273-TALK (2855).

Stay informed; for more information on COVID-19 visit www.elkocountynv.net or like us on Facebook at <https://www.facebook.com/ElkoCOVID19/>.

Nevadans can visit <https://nvhealthresponse.nv.gov/> for up to date information in regards to COVID-19 in Nevada. Additional information is available from the Centers for Disease Control at <https://www.cdc.gov/coronavirus/2019-nCoV/index.html>.

###