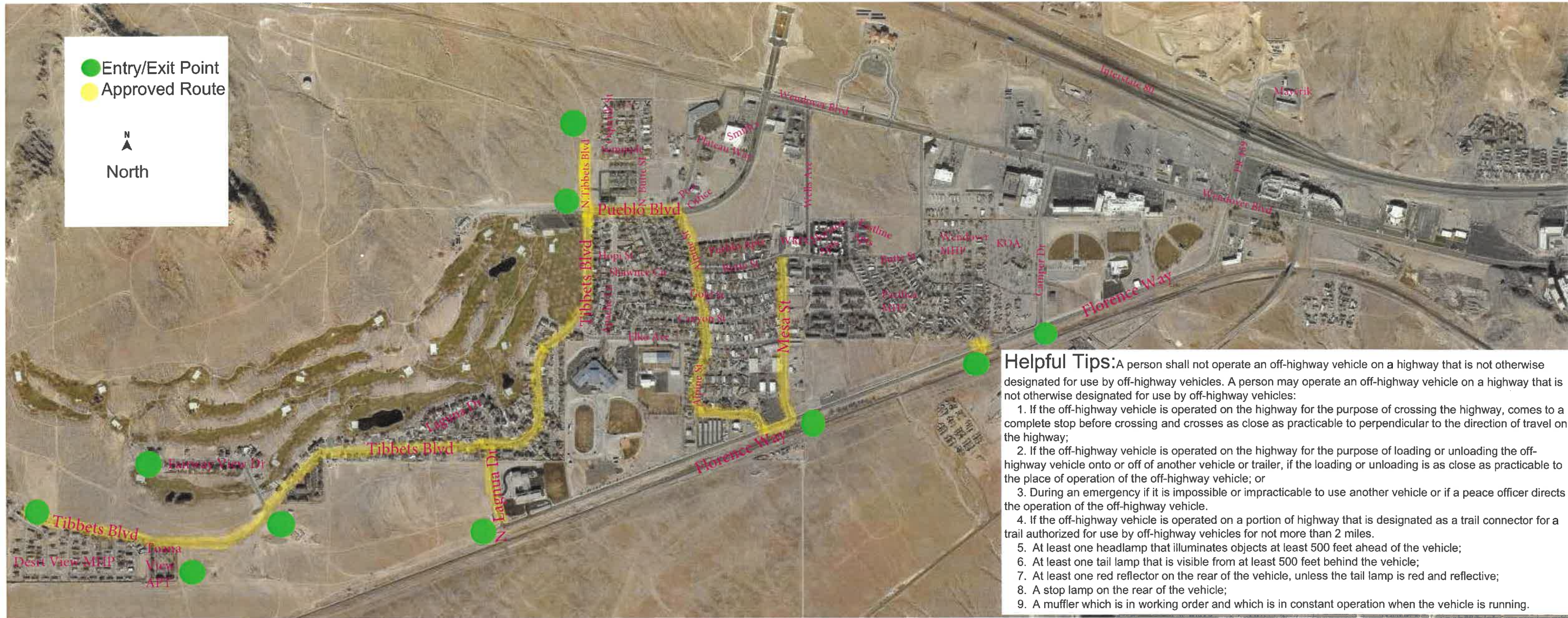


● Entry/Exit Point
— Approved Route
 N
 North



- Helpful Tips:** A person shall not operate an off-highway vehicle on a highway that is not otherwise designated for use by off-highway vehicles. A person may operate an off-highway vehicle on a highway that is not otherwise designated for use by off-highway vehicles:
1. If the off-highway vehicle is operated on the highway for the purpose of crossing the highway, comes to a complete stop before crossing and crosses as close as practicable to perpendicular to the direction of travel on the highway;
 2. If the off-highway vehicle is operated on the highway for the purpose of loading or unloading the off-highway vehicle onto or off of another vehicle or trailer, if the loading or unloading is as close as practicable to the place of operation of the off-highway vehicle; or
 3. During an emergency if it is impossible or impracticable to use another vehicle or if a peace officer directs the operation of the off-highway vehicle.
 4. If the off-highway vehicle is operated on a portion of highway that is designated as a trail connector for a trail authorized for use by off-highway vehicles for not more than 2 miles.
 5. At least one headlamp that illuminates objects at least 500 feet ahead of the vehicle;
 6. At least one tail lamp that is visible from at least 500 feet behind the vehicle;
 7. At least one red reflector on the rear of the vehicle, unless the tail lamp is red and reflective;
 8. A stop lamp on the rear of the vehicle;
 9. A muffler which is in working order and which is in constant operation when the vehicle is running.